

Delta-3 Series

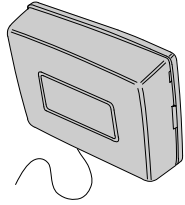
**DRA**

**DIGITAL RECEIVER**

Installation Instructions

**Linear**<sup>®</sup>

(800) 421-1587 • www.linearcorp.com



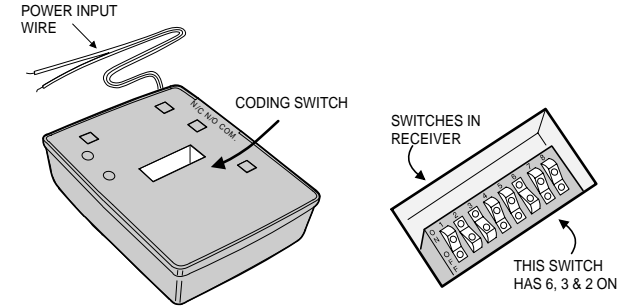
**DESCRIPTION**

The Delta-3 DRA receiver is a small economical unit designed for commercial gate and door access control. It is compatible with solid state control boards. Upon receipt of a properly coded signal from a transmitter, it provides a switch operation for both NO and NC circuits. Any Delta-3 transmitter may be coded to activate this receiver, and any number of transmitters may be used to operate this receiver. In addition, the DRA may be programmed to respond to one of 256 digital codes.

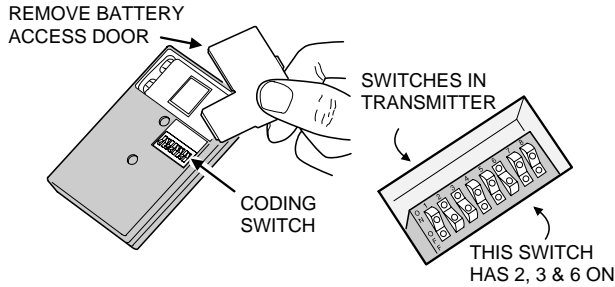
In order to avoid the possibility of duplicating codes in adjacent systems, the factory set codes should not be used. In addition, among the valid codes available, four others should not be used because they are too often duplicated. These include: (1) all keys set to ON, (2) all keys set to OFF, (3) keys set in alternating ON-OFF positions, and (4) keys set in alternating OFF-ON positions.

Where a number of receivers are to be installed in close proximity (as in an apartment complex), install such receivers at least 10 feet apart. If receivers are installed closer than 10 feet apart, blocking may occur.

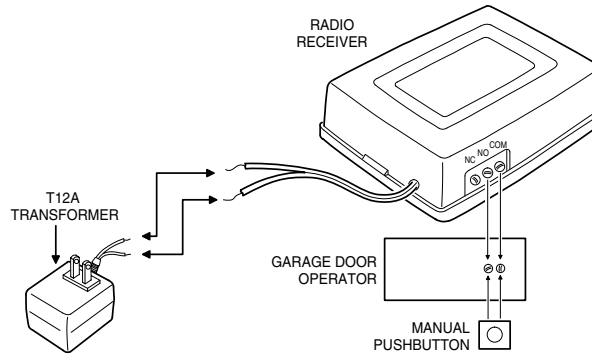
**STEP 1A Receiver code setting.** Locate the receiver coding switch which is recessed in the back of the receiver case. To set a code, select any valid combination of ON and OFF positions for the switch keys numbered 1 through 8. Use a paper clip to set the eight keys on your receiver.



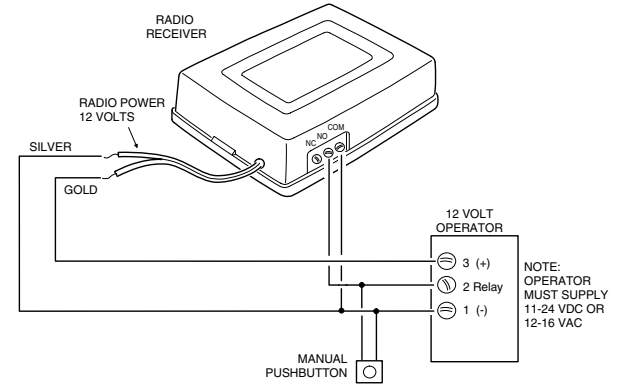
**STEP 1B Transmitter code setting.** Locate the coding switch on the transmitter and set the eight keys identical to those on the receiver. Be sure they are both coded from left to right! Be sure they are identical! If using a two or four-channel transmitter refer to the coding instructions included with the transmitter for proper system coding.



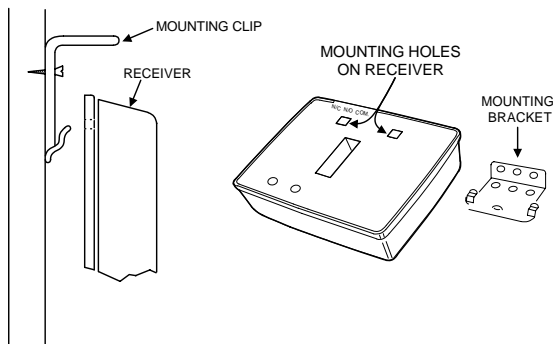
**STEP 2A Connecting receiver (Using transformer power).** A Model T12A transformer can be used to power the receiver when connecting receiver to any operator. Connect as shown, then plug the transformer into a convenient (unswitched) 120 VAC outlet.



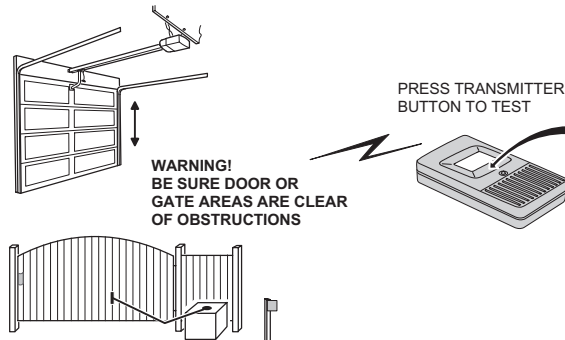
**STEP 2B Connecting receiver (using operator power).** Connect the receiver to the garage door or gate operator as shown in the diagram. Power will be supplied from the operator.



**STEP 3 Optional receiver mounting bracket.** A mounting clip is packaged with each receiver. To install the receiver, attach the clip to the mounting surface with screws. Position the two rectangular holes on the back of the receiver over the clip and snap the receiver down into place.



**STEP 4 Test receiver.** Be sure the door or gate area is clear. Activate each transmitter and verify that the receiver triggers the operator. If desired, a continuity meter may be used to test the relay contact closure.



**LIMITED WARRANTY**

This product is warranted to the consumer against defects in material and workmanship for one year from the date of purchase. This warranty applies to first retail buyers of new devices. Warrantor will repair, or at its option, replace, any device it finds that requires service under this warranty, and will return the repaired or replaced device to the consumer at the warrantor's cost. For warranty service and shipping instructions contact warrantor at the address shown below. Devices must be sent to warrantor for service at owner's expense. The remedies provided by this warranty are exclusive. Implied warranties under state law are limited to the one year period of this written warranty. Some states do not allow limitations on how long an implied warranty lasts, so the above limitation may not apply to you. In order to be protected by this warranty, save your proof of purchase and send copy with equipment should repair be required. This warranty gives you specific legal rights, and you may also have other rights which vary from state to state.

All products returned for warranty service require a Return Product Authorization Number (RPA#). Contact Linear Technical Services at 1-800-421-1587 for an RPA# and other important details.

**IMPORTANT !!!**

Linear radio controls provide a reliable communications link and fill an important need in portable wireless signaling. However, there are some limitations which must be observed.

- \* For U.S. installations only: The radios are required to comply with FCC Rules and Regulations as Part 15 devices. As such, they have limited transmitter power and therefore limited range.
- \* A receiver cannot respond to more than one transmitted signal at a time and may be blocked by radio signals that occur on or near their operating frequencies, regardless of code settings.
- \* Changes or modifications to the device may void FCC compliance.
- \* Infrequently used radio links should be tested regularly to protect against undetected interference or fault.
- \* A general knowledge of radio and its vagaries should be gained prior to acting as a wholesale distributor or dealer, and these facts should be communicated to the ultimate users.